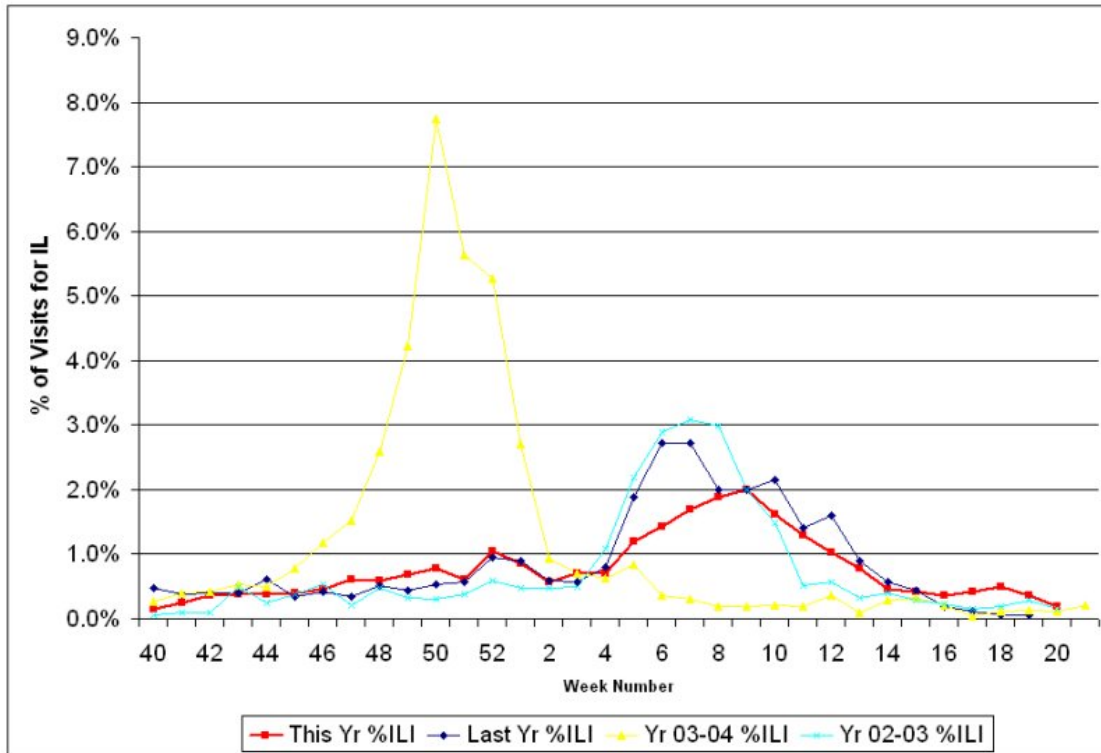


**North Carolina Influenza Update**  
**Final Weekly Statistical Report for 2005-2006 Flu Season**  
**May 25, 2006**

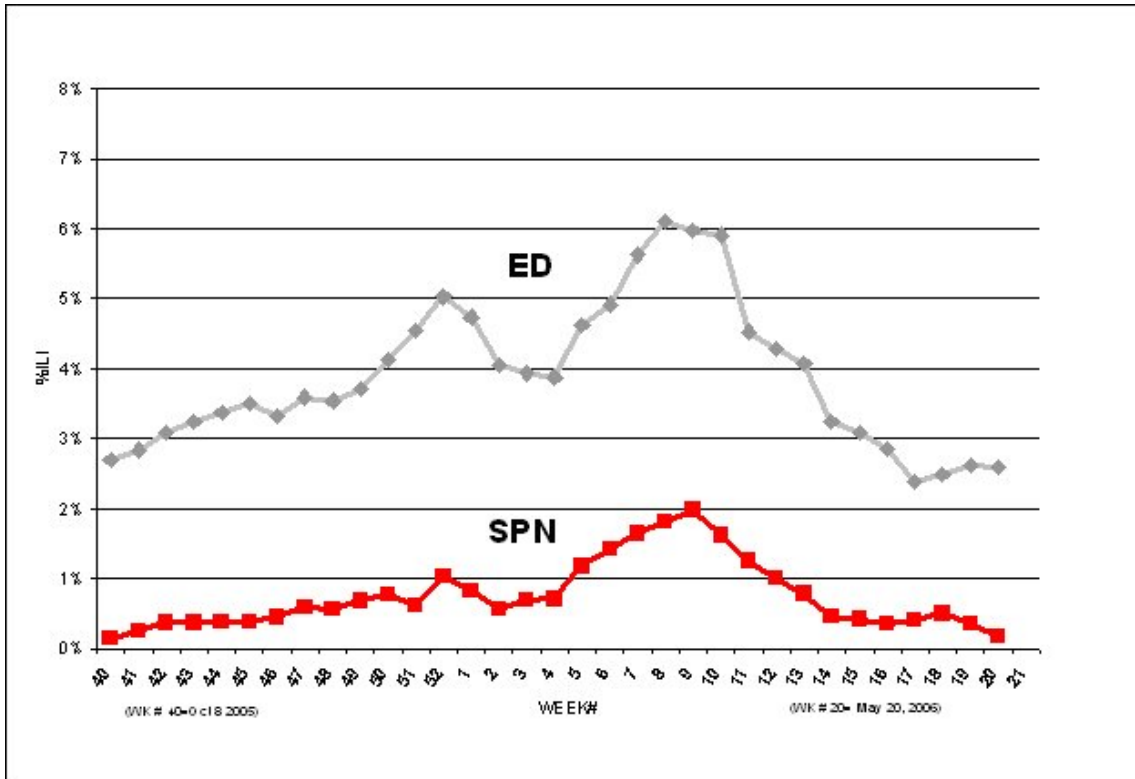
**I. Influenza-Like Illnesses Reported by N.C. Sentinel Sites**

<b>Week Number</b>	<b>Ending</b>	<b>Number ILI</b>	<b>Patient Visits</b>	<b>Percent ILI</b>
40	10/8/2005	28	18,279	0.15%
41	10/15/2005	49	19,163	0.25%
42	10/22/2005	84	22,640	0.37%
43	10/29/2005	85	22,511	0.37%
44	11/5/2005	99	25,608	0.38%
45	11/12/2005	91	23,181	0.39%
46	11/19/2005	114	25,393	0.44%
47	11/26/2005	109	17,987	0.60%
48	12/3/2005	151	25,757	0.58%
49	12/10/2005	171	25,081	0.68%
50	12/17/2005	160	20,705	0.77%
51	12/24/2005	104	16,879	0.61%
52	12/31/2005	161	15,451	1.04%
01	1/7/2006	172	20,266	0.84%
02	1/14/2006	147	25,964	0.56%
03	1/21/2006	187	26,413	0.70%
04	1/28/2006	180	25,252	0.71%
05	2/4/2006	316	26,437	1.19%
06	2/11/2006	354	24,756	1.42%
07	2/18/2006	426	25,292	1.68%
08	2/25/2006	471	24,960	1.88%
09	3/4/2006	523	26,069	2.00%
10	3/11/2006	370	22,776	1.62%
11	3/18/2006	273	21,192	1.28%
12	3/25/2006	235	23,055	1.01%
13	4/01/2006	173	22,178	0.78%
14	4/08/2006	87	18,698	0.46%
15	4/15/2006	81	19,079	0.42%
16	4/22/2006	65	18,084	0.35%
17	4/29/2006	67	16,120	0.41%
18	5/6/2006	68	13,869	0.49%
19	5/13/2006	48	13,614	0.35%
20	05/20/2006	20	10,664	0.18%

**Percentage of Visits for Influenza-like Illness Reported by Sentinel Providers**  
**North Carolina, 2005-2006 (Red Line)**  
*With Comparative 2004-2005 Data (Blue Line)*  
*With Comparative 2003-2004 Data (Yellow Line)*  
*and Comparative 2002-2003 Data (Light Blue Line)*



**Influenza-Like Illness Surveillance in North Carolina, 2005-2006**  
**Comparative trend between two surveillance systems:**  
**Sentinel Provider Network (SPN) and Hospital Emergency Department (ED)**



**SPN:** 62 volunteer practitioners report weekly their patient workload; using ILI case definition: "fever and cough or sore throat."

**ED:** As of 05/20/2006, 81 hospitals report daily ED visits electronically through NC Hospital Emergency Surveillance System, NCHES; using ILI case definition: "one respiratory and one constitutional sign or symptom."

**II. Influenza Virus Isolates Identified by the State Laboratory of Public Health  
During the 2005-2006 Influenza Season**

<b>Week Number</b>	<b>Ending</b>	<b>Total Confirmed</b>	<b>County</b>	<b>Virus Type</b>	<b>No. Isolates of Same Virus</b>
40	10/8/2005	00	N/A	N/A	N/A
41	10/15/2005	01	Mecklenburg	A/H3	1
42	10/22/2005	00	N/A	N/A	N/A
43	10/29/2005	00	N/A	N/A	N/A
44	11/5/2005	00	N/A	N/A	N/A
45	11/12/2005	00	N/A	N/A	N/A
46	11/19/2005	00	N/A	N/A	N/A
47	11/26/2005	00	N/A	N/A	N/A
48	12/3/2005	01	Durham	A/H3	1
49	12/10/2005	00	N/A	N/A	N/A
50	12/17/2005	01	Wake	A/H3	1
51	12/24/2005	01	Mecklenburg	A/H3	1
52	12/31/2005	03	Mecklenburg	A/H3	1
			Wake	A/H3	1
			Orange	A/H3	1
01	1/7/2006	02	Mitchell	A/H3	1
			Orange	A/H3	1
02	1/14/2006	05	Brunswick	A/H3	2
			Henderson	A/H3	1
			Wake	A/H3	1
			Wilkes	A/H3	1
03	1/21/2006	10	Cabarrus	A/H3	1
			Durham	A/H3	1
			Guilford	A/H3	1
			Henderson	A/H3	1
			Lee	A/H3	1
			Orange	A/H3	3
			Wake	A/H3	2
04	1/28/2006	19	Forsyth	A/H3	4
			Guilford	A/H3	1
			Orange	A/H3	1
			Pitt	A/H3	1
			Vance	A/H3	1
			Wake	A/H3	11
05	2/4/2006	21	Ashe	A/H3	1
			Buncombe	A/H3	1
			Cabarrus	A/H3	2
			Forsyth	A/H3	5
			Guilford	A/H3	1

**II. Influenza Virus Isolates Identified by the State Laboratory of Public Health  
During the 2005-2006 Influenza Season**

<b>Week Number</b>	<b>Ending</b>	<b>Total Confirmed</b>	<b>County</b>	<b>Virus Type</b>	<b>No. Isolates of Same Virus</b>
			Johnston	A/H1	1
			Orange	A/H3	3
			Tyrrell	A/H3	1
			Vance	A/H3	1
			Wake	A/H3	5
06	2/11/2006	19	Cabarrus	A/H3	2
			Durham	A/H3	1
			Forsyth	A/H3	1
			Guilford	A/H3	6
			Orange	A/H3	1
			Pitt	A/H3	1
			Rockingham	A/H3	1
			Vance	A/H3	1
			Wake	A/H3	1
			Watauga	A/H3	2
			Wilkes	A/H3	2
07	2/18/2006	29	Buncombe	A/H3	3
			Cabarrus	A/H3	2
			Forsyth	A/H3	2
			Guilford	A/H3	4
			Jackson	A/H3	4
			Lee	A/H3	1
			Orange	A/H3	1
			Pitt	A/H3	4
			Rockingham	A/H3	2
			Wake	A/H3	3
			Wilkes	A/H3	3
08	2/25/2006	19	Cabarrus	A/H3	2
			Caldwell	A/H3	1
			Cumberland	A/H3	2
			Granville	A/H3	1
			Guilford	A/H3	3
			Henderson	A/H3	1
			Jackson	A/H3	1
			Johnston	A/H3	1
			Pitt	A/H3	1
			Rockingham	A/H3	1
			Wake	A/H3	3
			Wilkes	A/H3	2
09	3/4/2006	25	Buncombe	A/H3	2
			Cabarrus	A/H3	1

**II. Influenza Virus Isolates Identified by the State Laboratory of Public Health  
During the 2005-2006 Influenza Season**

<b>Week Number</b>	<b>Ending</b>	<b>Total Confirmed</b>	<b>County</b>	<b>Virus Type</b>	<b>No. Isolates of Same Virus</b>
			Cumberland	A/H3	1
			Forsyth	A/H3	1
			Guilford	A/H3	3
			Jackson	A/H3	2
			Mecklenburg	A/H3	1
			Pitt	A/H3	6
			Pitt	B	1
			Union	A/H3	2
			Wake	A/H3	2
			Watauga	A/H3	1
			Wilkes	A/H3	2
10	3/11/2006	11	Cumberland	A/H3	3
			Onslow	A/H3	1
			Pitt	A/H3	5
			Wake	B	1
			Watauga	A/H3	1
11	3/18/2006	07	Buncombe	A/H3	1
			Cabarrus	A/H3	1
			Durham	A/H3	1
			Guilford	B	1
			Pitt	A/H3	2
			Wilkes	A/H3	1
12	3/25/2006	06	Cumberland	A/H1	1
			Durham	A/H3	1
			Jones	A/H3	1
			Northhampton	A/H1	1
			Union	A/H3	1
			Wake	B	1
13	4/1/2006	04	Durham	A/H3	1
			Mitchell	B	1
			Northhampton	A/H3	1
			Wake	B	1
14	4/8/2006	02	Onslow	A/H3	1
			Watauga	B	1
15	4/15/2006	00	N/A	N/A	0
16	4/22/2006	02	Cumberland	A/H3	1
			Wake	B	1
17	4/29/2006	01	Wake	B	1
18	5/6/2006	00	N/A	N/A	N/A
19	5/13/2006	00	N/A	N/A	N/A
20	5/20/2006	00	N/A	N/A	N/A

**II. Influenza Virus Isolates Identified by the State Laboratory of Public Health  
During the 2005-2006 Influenza Season**

<b>Week Number</b>	<b>Ending</b>	<b>Total Confirmed</b>	<b>County</b>	<b>Virus Type</b>	<b>No. Isolates of Same Virus</b>
TOTAL ISOLATES IDENTIFIED TO DATE				A/H1	3
				A/H3	178
				B	9
				Total	190