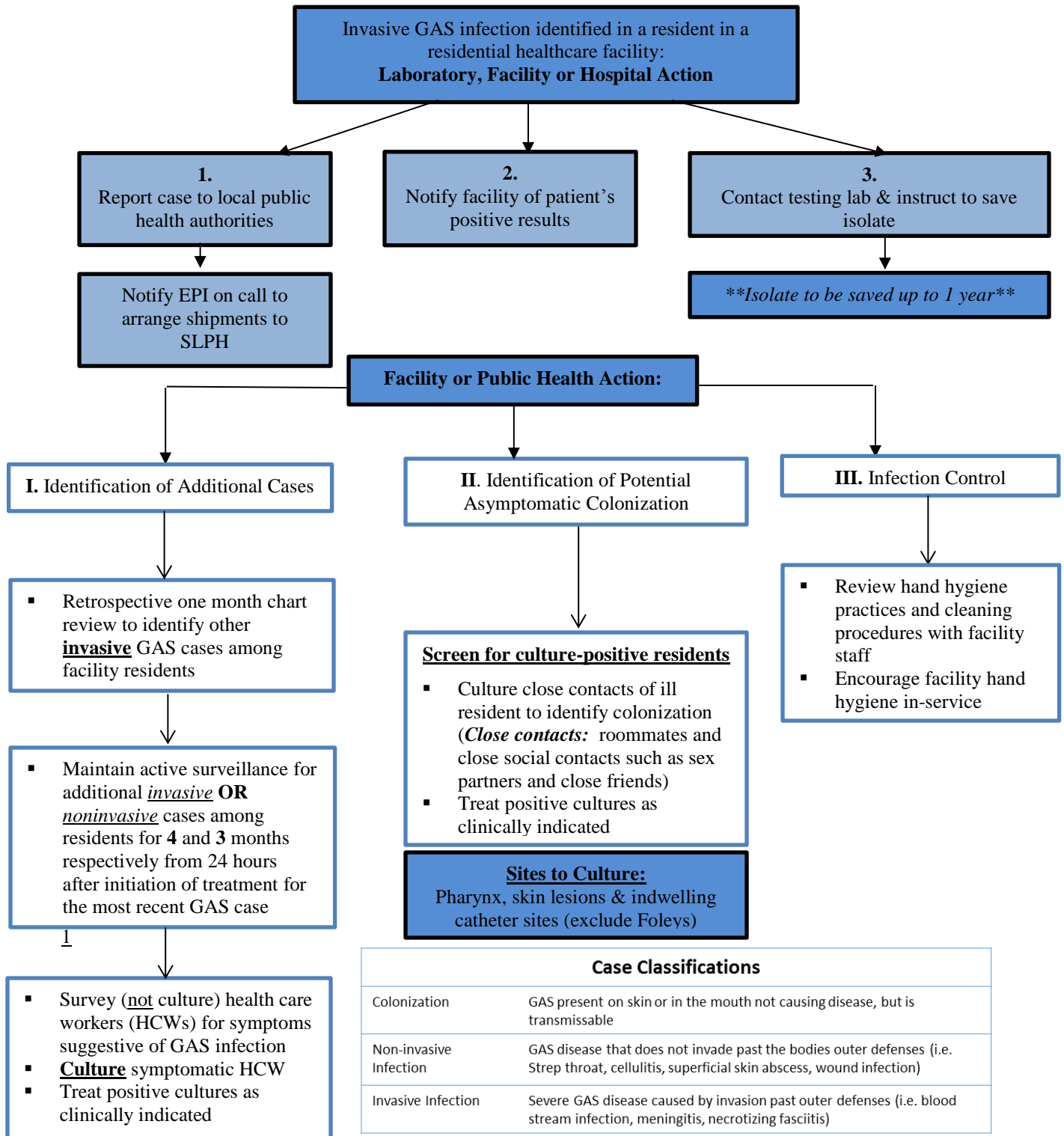


Investigation of One Culture-Confirmed Invasive GAS Infection

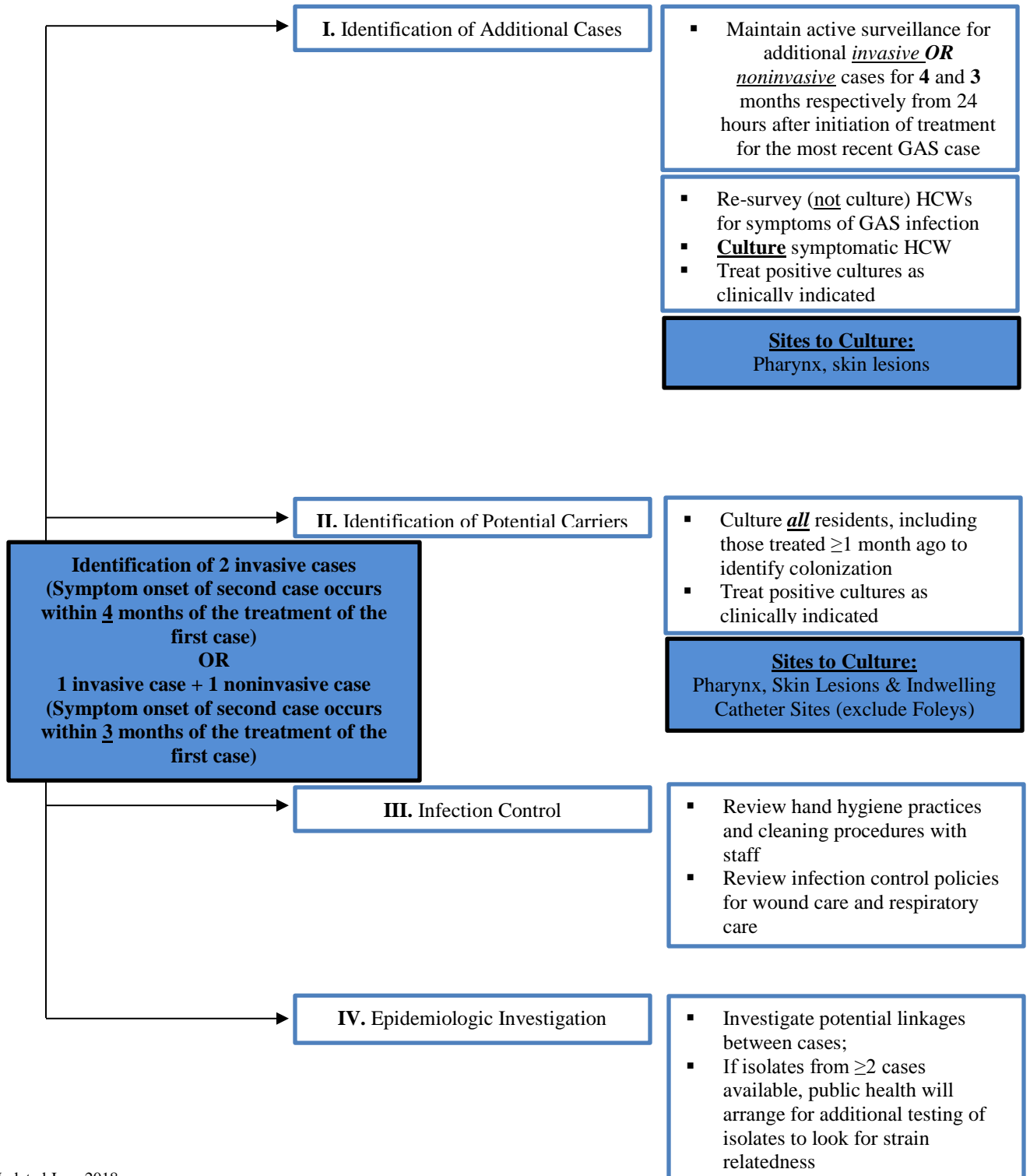
Given the potential severity of GAS in residential healthcare facilities, **even one case of invasive GAS** should prompt an epidemiological investigation by the facility and the local health department.



Investigation of Two Culture-Confirmed Cases of GAS Infection

As outlined in the investigation of a single culture-confirmed case, the laboratory or hospital identifying the positive culture result should inform the facility as well as the local health department.

The GAS isolate should be saved and sent to the state public health laboratory for storage.



Investigation of Three or More Culture-Confirmed Cases of GAS

Continue steps outlined in algorithms for one or two cases: **1) Notify Facility of patient, 2) Notify LHD of all new cases, 3) Save all GAS isolates to send to public health laboratory, 4) Continue surveillance for additional cases.**

