



Evaluation of Animal Bites for Rabies Risk

What constitutes an exposure?

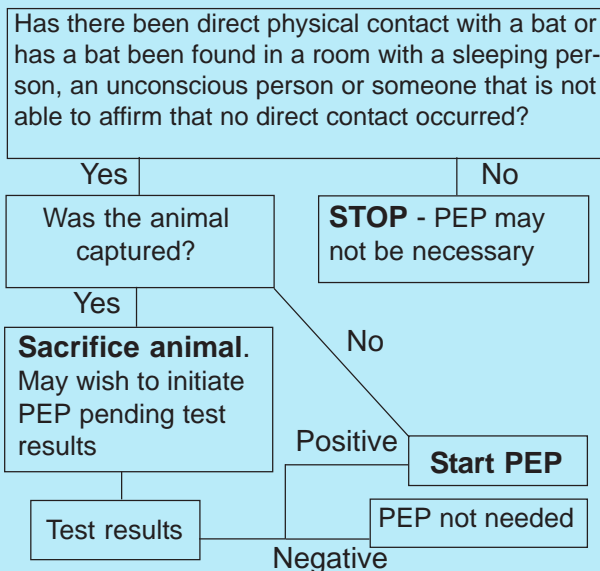
Any penetration of skin by the teeth of a potentially rabid animal or contamination of scratches, abrasions, open wounds or mucous membranes with saliva or other potentially infectious material (such as brain tissue) of a potentially rabid animal.

Evaluating the risk of exposure to the virus

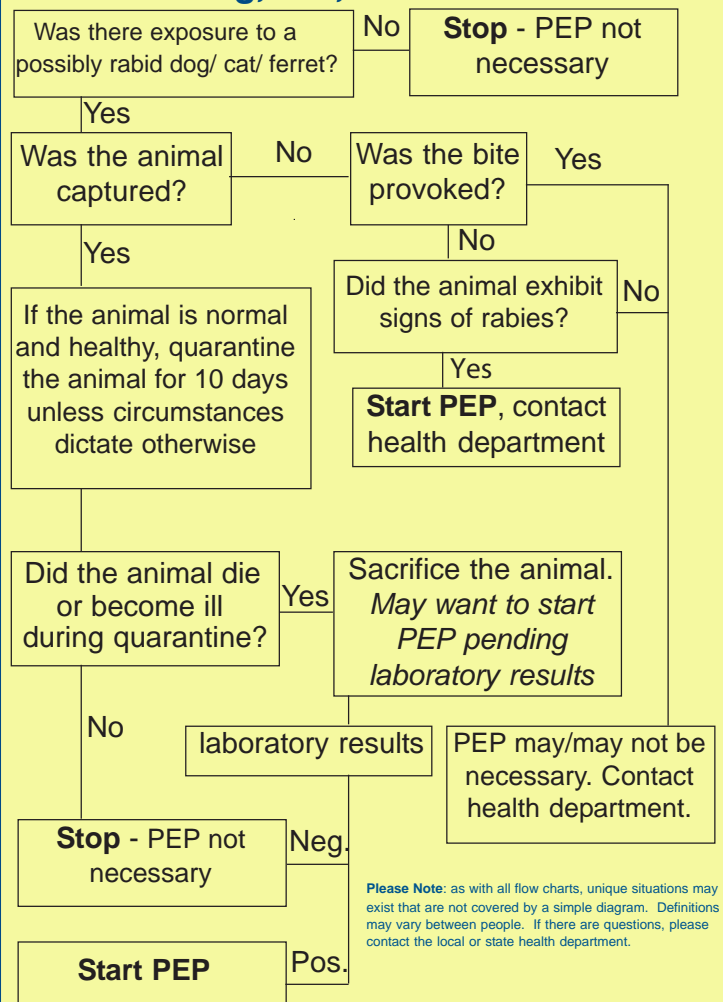
- * When did the exposure occur?
- * What was the animal species?
- * Can the patient positively identify the dog or cat?
- * What were the circumstances of the exposure: provoked or unprovoked?
- * Was there exposure to rabies virus as defined above?
- * Was the animal captured? If a dog, cat, and/or ferret, what is the possibility that it will be captured?

PEP = post-exposure prophylaxis

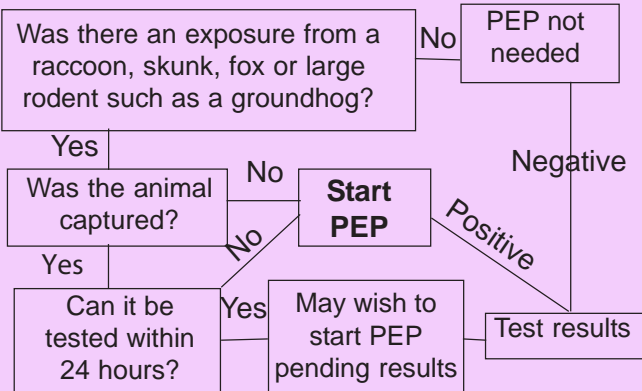
Bats



Dog, Cat, and/or Ferret



Wild Animals



Please Note: as with all flow charts, unique situations may exist that are not covered by a simple diagram. Definitions may vary between people. If there are questions, please contact the local or state health department.