

North Carolina Heat Report

July 31 – August 6, 2022



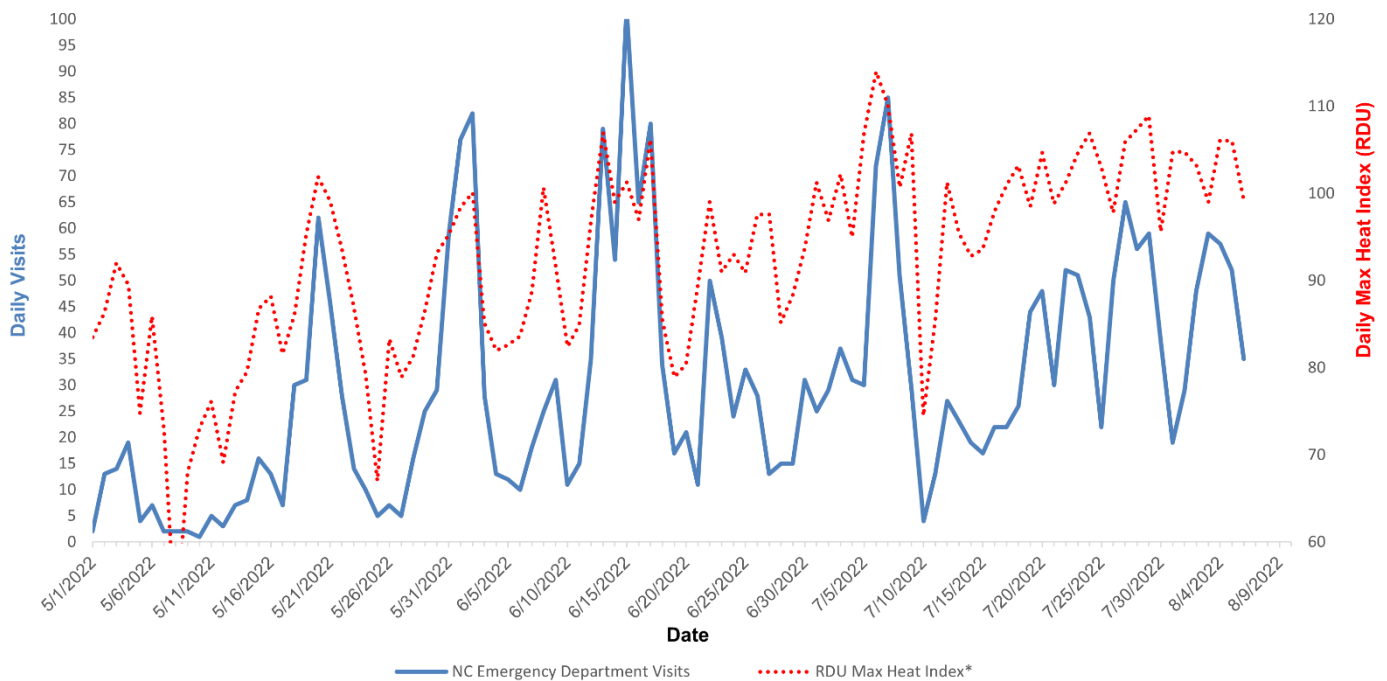
This Week

- ☀ Daily maximum heat indices ranged from 99°F to 106°F (median = 105°F) at Raleigh-Durham International Airport (RDU)
- ☀ 299 emergency department visits for heat-related illness were observed (Figure 1)
 - ☀ 78% of visits were for males, most were between ages 25 and 44.
 - ☀ The most frequent heat related diagnosis code was Heat Exhaustion (Table 2)
 - ☀ Most visits were seen in hospitals in the Piedmont (49%) and Coastal (47%) regions
 - ☀ 16% of visits were seen in hospitals in the Sandhills sub-region¹
- ☀ This week the proportion of emergency department visits for heat-related illness was 0.31%, similar to the historical average (Figure 2)

Season to Date (August 2022)

- ☀ 3,041 emergency department visits for heat-related illness have been identified (Figure 1)
- ☀ Common activities preceding illness are working outdoors and recreation

Figure 1. Emergency Department Visits for Heat-Related Illness and Maximum Heat Index -- North Carolina, May 1 - August 06, 2022



Source: NC DETECT Data and State Climate Office at NC State University for Raleigh-Durham International Airport (RDU).
 Max Heat Index is for Raleigh-Durham International Airport (RDU)

¹The Sandhills sub-region is comprised of the following counties from the Piedmont and Coastal regions: Bladen, Cumberland, Harnett, Hoke, Lee, Montgomery, Moore, Richmond, Robeson, and Scotland.

Table 1. Visits by sex and age group - July 31 – August 6, 2022

	N=299*	(%)†
Sex		
Male	234	(78)
Female	65	(22)
Age		
0-14	6	(2)
15-18	11	(4)
19-24	19	(6)
25-44	107	(36)
45-64	98	(33)
65+	58	(19)

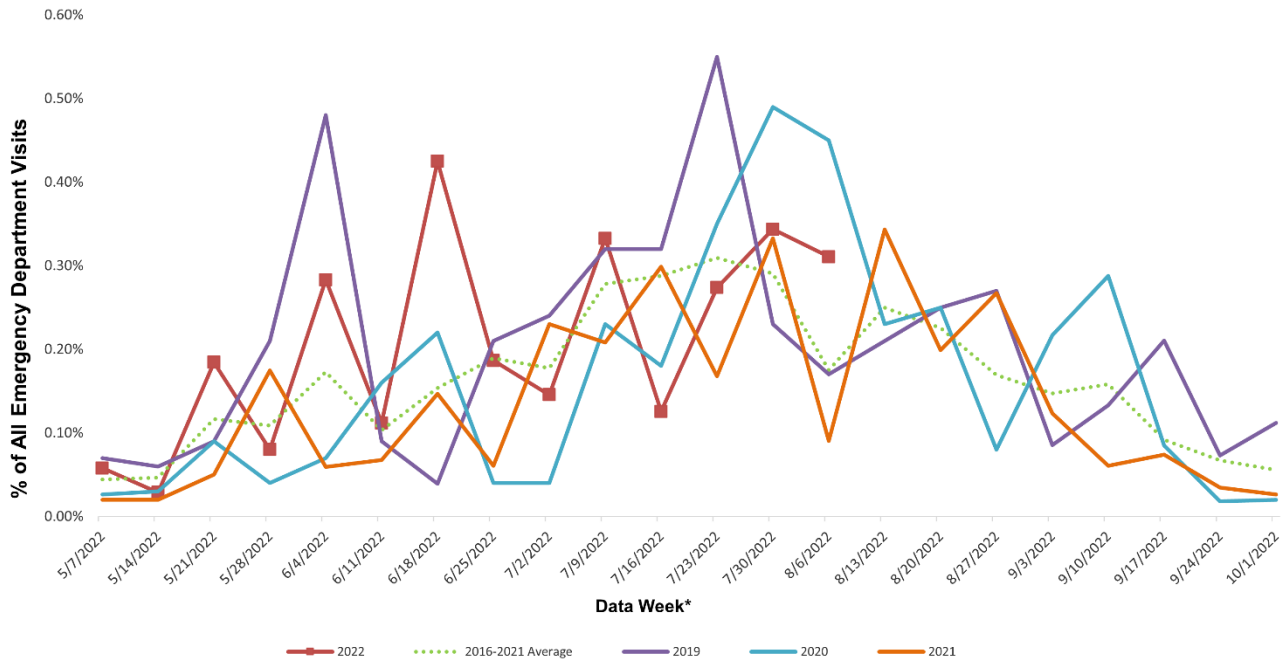
Table 2. Visits by severity – July 31 – August 6, 2022

	N=185‡	(%)†
Severity§		
Heat Exhaustion	124	(67)
Heat Cramp	7	(4)
Heat Stroke	4	(2)
Heat Syncope	11	(6)
Other Effects	39	(21)

*n may vary from weekly total visits † may not total 100 due to rounding ‡ missing severity data = 114 § definitions of heat related illness categories <https://www.cdc.gov/niosh/topics/heatstress/heatrelillness.html> || other effects include heat fatigue, heat edema, other effects of heat and light, and other effects unspecified

NOTE: Emergency department visit records and maximum heat indices were obtained from NC DETECT and the State Climate Office at NC State University, respectively. Heat-related illness is captured through a near real-time keyword search for 'heat', 'hot', 'hyperthermia', 'heat cramp', 'heat exhaustion', 'heat stroke', and 'sun stroke' in chief complaint or triage notes of emergency department records or a diagnosis code for heat-related illness. These figures present an estimate of the number of emergency department visits for heat-related illness. Please contact autumn.locklear@dhhs.nc.gov for more information.

Figure 2. Percent of Total Emergency Department Visits for Heat-Related Illness -- North Carolina, 2022 Compared to Historical Average



*Data begins 05/01/2015 to 2021 reporting period. Week ending dates may vary by a few days for earlier years. For data week definitions see <https://www.cdc.gov/nndss/downloads.html>. Hospitals transitioned from the ICD-9-CM diagnosis code standard to ICD-10-CM in 2015. This transition may impact the number of emergency department visits with a heat related illness diagnosis. Source: NC DETECT

Disclaimer: The North Carolina Disease Event Tracking and Epidemiologic Collection Tool (NC DETECT) is an advanced, statewide public health surveillance system. NC DETECT is funded with federal funds by North Carolina Division of Public Health (NC DPH), Public Health Emergency Preparedness Grant (PHEP), and managed through a collaboration between NC DPH and the University of North Carolina at Chapel Hill Department of Emergency Medicine's Carolina Center for Health Informatics (UNC CCHI). The NC DETECT Data Oversight Committee does not take responsibility for the scientific validity or accuracy of methodology, results, statistical analyses, or conclusions presented. The NC DETECT Data Oversight Committee (DOC) includes representatives from the NC DPH, UNC NC DETECT Team and NC Hospital Association.