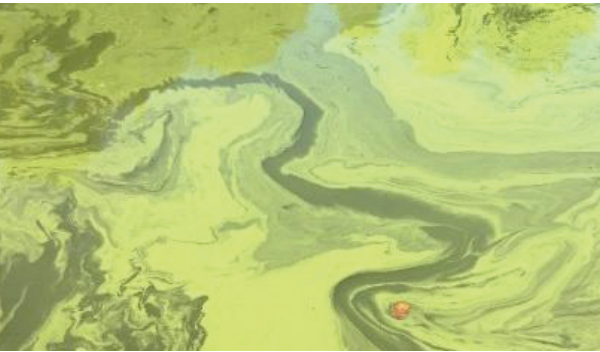


KEEP YOUR PETS SAFE THIS SUMMER!

If the water has the following characteristics or looks like the pictures below, avoid the water:

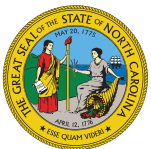
- discolored water that appears green, blue, red, or brown in color
- looks like spilled paint
- surface scums, mats, and/or films



If your pet has been around water and is displaying the following symptoms:

- Loss of energy
- Vomiting
- Diarrhea
- Excessive drooling
- Loss of appetite
- Stumbling and falling
- Foaming at the mouth
- Tremors and seizures

Please reach out to your local veterinarian and/or call ASPCA Animal Poison Control Center at 1-888-426-4435



NC DEPARTMENT OF
**HEALTH AND
HUMAN SERVICES**
Division of Public Health

Epidemiology Section • Occupational and Environmental Epidemiology Branch • Private Well and Health Program • <https://epi.publichealth.nc.gov/oeep/programs/wellwater.html> • NCDHHS is an equal opportunity employer and provider. • 8/2022